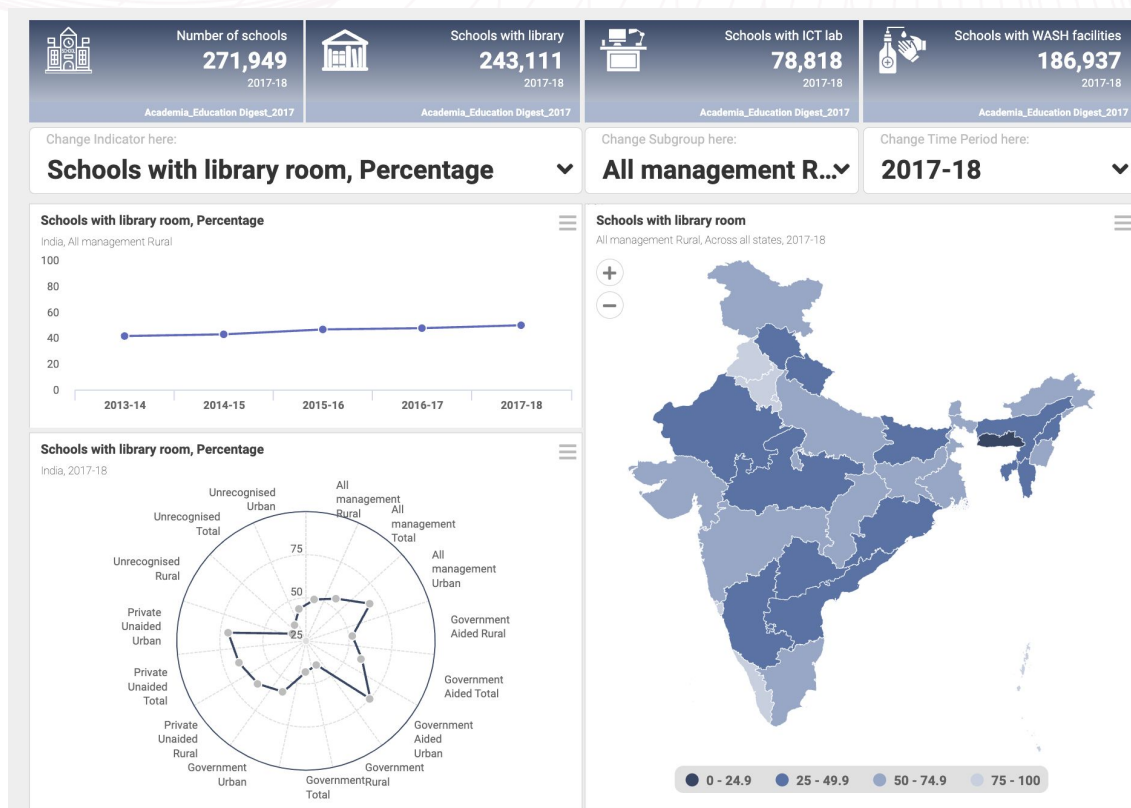




DFA Dashboard

Design and publish your data stories through
easy to build dashboards

DFA Dashboard



DFA Dashboard is a powerful tool allowing users to design and develop custom data dashboards without any coding knowledge. It is connected to an online data warehouse and the tool contains a

bundle of features that allow users to leverage the power of analytics. Data can be depicted through a series of charts, maps, tables, images, tiles, videos and so on.

► Why use DFA Data Dashboard?

Programme managers need the DFA Dashboard builder to translate their data stories into a dynamic decision making tool.

It brings to life powerful and dynamic analytics and generates comprehensive tools to better appreciate key performance indicators.

► Few implementations

- Afghanistan
- Bangladesh
- Chad
- Egypt
- India
- Mali
- Togo
- Ivory Coast



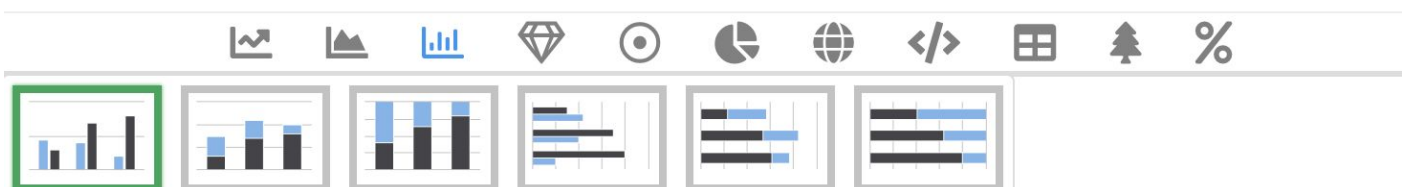
Features

► **Dynamic connection to a data warehouse:** Users can connect their dashboard dynamically to a data warehouse and use the information from there to populate charts in real time. Multiple data warehouses can be hosted in the dashboard builder.

► **Single and multi page dashboard:** The DFA dashboard allows users to create both a single page dashboard and also a multi page dashboard.

► **Built-in library of visualizations:** The DFA dashboard offers a vast range of built-in visualization/chart types for users to use in their dashboard design. To name a few of them;

1. Different types of line graphs
2. Area Charts
3. Variety of column and bar charts
4. Pie and donut charts
5. Maps etc



► **HTML editor:** For those users who would like to take the design to the next level and enhance the aesthetics, the application offers an HTML editor using which users can create their own custom objects and add text, images, animation and so much more.

► **Global Scripts:** In addition to the use of HTML custom objects, users also get a dedicated module to use CSS and apply custom styling which can be unique or common for the objects/design.



► **Built in image library and media folder:** The dashboard builder has a built in media library hosting more than 500+ icons for uses to use in their design. Alternatively, users have the option to upload their own images/icons and media files to be used in the dashboard design.



► **Header and Footer:** Users get a dedicated module to design a template of header and footer that they can use in their dashboard. The same template can be used in multiple dashboards to harmonize content and carry forward the branding across all dashboards under the same program/banner. The header and footer module has built-in features/functions for users to select and feed information to customize their design.

► **Language support:** The dashboard builder supports addition of multiple languages if the data warehouse has more than one language. A language module is available in the configuration section and allows users to design the dashboards and translate/make it available in multiple languages.

► **User management:** The application supports adding multiple users, who will each have their own library of dashboards that are accessible only to them.

► **Global chart settings:** The dashboard builder supports customization locally at the chart level and also applying features/customization for all objects/design at the global level through the global chart settings. It supports global customizations such as applying background color for all charts, customizing x and y-axis labels, customizing titles and subtitles and much more.



► **Apply themes:** The dashboard builder supports application of the following type of themes. The selected theme will get applied wherever the theme is active in a chart.

1. Indicator+Unit color theme
2. Subgroup color theme
3. Unit based formatting of data values
4. Indicator+Unit theme (heat maps) based on ranges and class intervals.

► **Preview, Publish and Unpublish modes:**

Preview - Users can use the preview mode to inspect/review the progress made while designing by clicking on the preview icon. This will open a preview page reflecting the live dashboard design without publishing it.

Publish - Once the design is completed, users can use the publish feature to publish their dashboard design and share with other users/ put it on the public domain for view only access.

Unpublish - In case the user feels there is need for validating the design or requires further editing after it is published and wants to restrict the access to the public then they can use the unpublish feature and deactivate the link until the design is ready to be shared again.

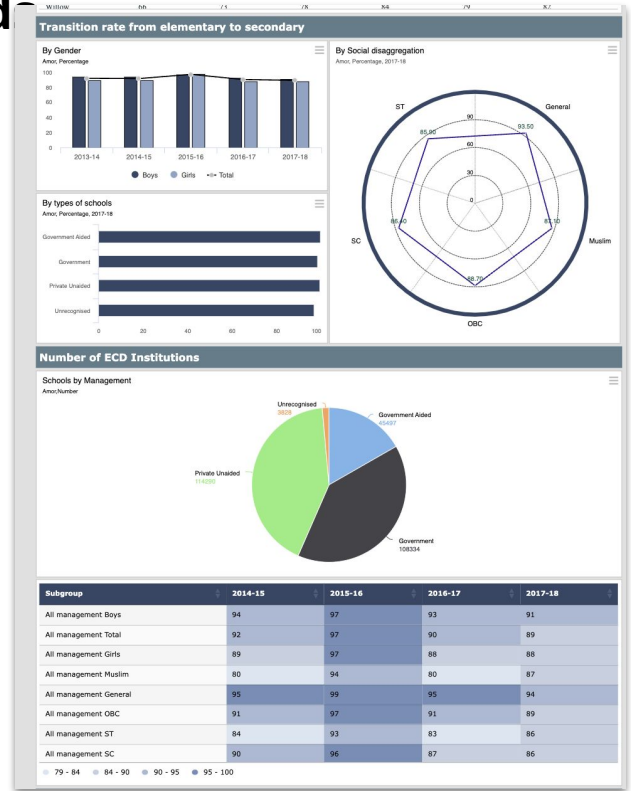
► **Special list view visualizations:** The dashboard offers a special type of visualization called the select list and global select list objects. This object allows users to create a list of information from the data warehouse such as list of indicators, subgroups, areas and time period to be connected to other objects and act as a list to select information.

► **Child hook:** The dashboard also has a special concept called child hooks allowing users to use the select list and hook them to other objects and use it as a slicing and splicing tool. The information selected from the select list will populate the final output in the objects that are hooked to the select list.

Key Outputs

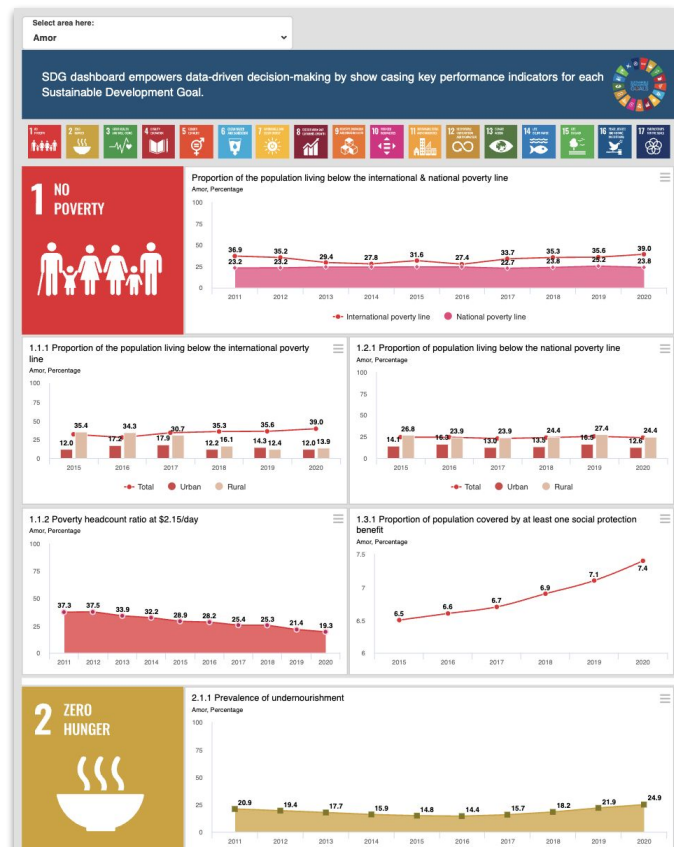
Sector/Thematic Dashboard

Sectorial/Thematic Dashboards allow the administrators to develop custom Data warehouses. Such Data warehouses can be put to use to depict cross-sectoral data on a dashboard to facilitate the decision-making process.



SDG Dashboards

Design your SDG dashboard and leverage the media library to easily pick the SDG related graphic files to build your own dashboard.



Technology Stack

DFA Dashboard

FRONT END

BACK END

DATABASE

Angular
JS

HTML

CSS

Highcharts

Cake
3.10

PHP 7.4

MySQL 8



Restful API